

Our Mission

The EQUUS Foundation is the only national charity in the United States 100% dedicated to ensuring the welfare of America's horses and fostering the horse-human bond.

Our mission is to protect America's horses, enable as many people as possible to benefit from the horse's unique ability to empower, teach, and heal, especially people with special needs, and educate the public on the importance of the horse-human bond in America today - a bond that has existed for centuries. We believe horses enrich the human body and spirit.



Horses Change Lives!

Horses thrill us as athletes, inspire confidence and teamwork in equestrians of all ages, grace our lives as companions, and perform miracles for people with special needs.

Horses can dramatically improve the lives of people with special needs and allow them to live life as productively and independently as possible, yet equine activities and therapies are only available to a small percentage of people with special needs.

The EQUUS Foundation is dedicated to increasing the number of horses participating in Equine Assisted Activities and Therapies (EAAT) and providing the means for as many people as possible to benefit from the horse's unique ability to empower, teach and heal.

America's Horses Need Our Protection!

All horses, even champions of the racetrack and the show ring, are only one unlucky sale away from abuse, neglect and slaughter.

100,000 of America's horses were transported over the border for slaughter last year. Most were young, healthy, and had untapped potential. None deserved this inhumane end of life.

The EQUUS Foundation is dedicated to increasing the rehoming of America's horses in transition and ensuring that all of America's horses are safe and live in comfort with purpose and dignity.

helping horses
healing people

Where They Go Next Matters — and It's Up to All of Us!

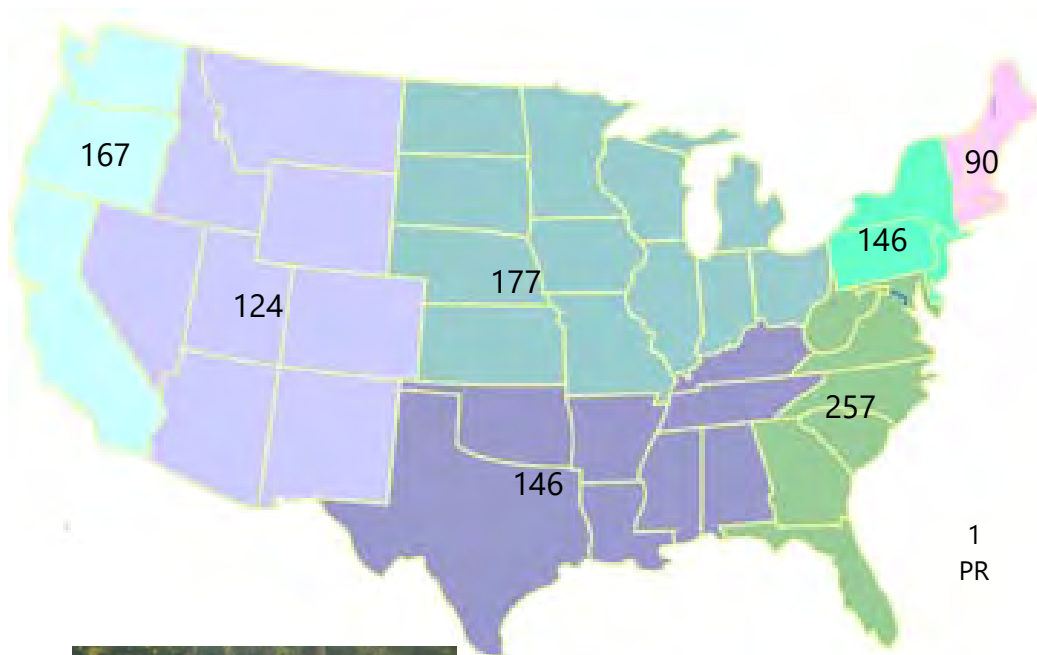
Equine Welfare Network

Connecting equine enthusiasts with equine organizations across America

The Equine Welfare Network connects individuals with equine organizations across America. It consists of the Equine Charity Network and the Equine Education Network.

Equine Charity Network

Our goal is to populate the network with all eligible organizations that are improving the lives of horses and people and build a support base of equine enthusiasts and advocates. There are currently over 1,000 organizations and over 4,000 individuals participating on the Equine Welfare Network.



1
PR



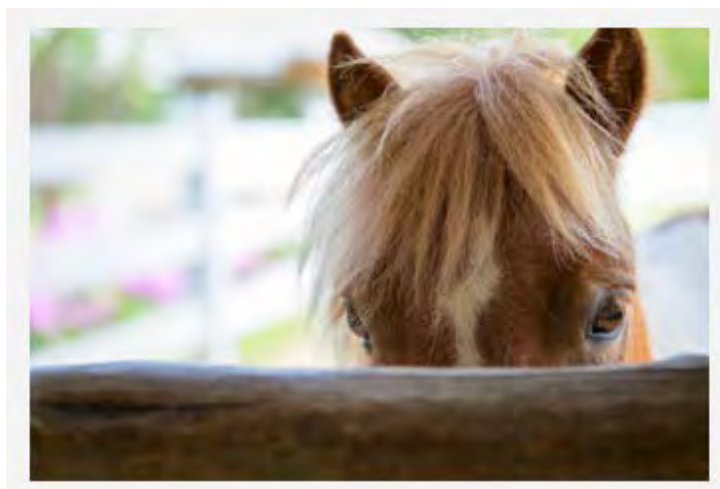
Equine Charity Network organizations may receive distinction as either Alliance Members or Messengers.

Messengers *Ensuring transparency and accountability in how horses are used and cared for*

The Messengers program was established in the Fall of 2013 to recognize organizations on the Equine Welfare Network that demonstrate a commitment to public transparency by their willingness to publish and share extensive data about their programs, horse care practices, and governance.

At the close of the Foundation's 2017 fiscal year, 156 organizations were approved as Messengers.

Only Messengers are eligible to receive financial support from the EQUUS Foundation.



Alliance

Partnering with national organizations to achieve common goals

The Alliance program was established in 2011 to recognize the contributions of non-profit organizations involved in the equine community whose activities and programs complement and enhance the mission of the EQUUS Foundation.

American Association of Equine Practitioners Foundation
American Hippotherapy Association, Inc.
American Humane Association
American Morgan Horse Association
American Morgan Horse Educational Charitable Trust
American Society for the Prevention of Cruelty to Animals
American Vaulting Association
Certified Horsemanship Association (CHA)
College Preparatory Invitational (CPI) Horse Show
Equestrian Aid Foundation
Equine Land Conservation Resource
Global Federation of Animal Sanctuaries
Hampton Classic Horse Show
Horses and Humans Research Foundation
Humane Equine Aid & Rapid Transport (HEART)
Intercollegiate Equestrian Foundation, Inc.
Intercollegiate Horse Show Association
Interscholastic Equestrian Association

Kentucky Horse Park Foundation
Maryland Horse Industry Board
National Association of Equine Affiliated Academics (NAEAA)
National Horse Show Association of America
North American Riders Group
PATH International
Pennsylvania National Horse Show Foundation
Retired Racehorse Training Project
Right Horse Initiative
Thoroughbred Charities of America (TCA)
United States Equestrian Federation, Inc.
United States Equestrian Team Foundation, Inc.
United States Hunter Jumper Association Inc.
United States Pony Clubs, Inc.
Unwanted Horse Coalition
USHJA Foundation
Washington International Horse Show Assn. Ltd.

Equine Education Network

Encouraging the pursuit of careers in the equine industry

Established in 2015, the Equine Education Network is an online resource of over 200 educational institutions with equine studies and riding programs, including veterinary schools.

Its purpose is to connect individuals interested in pursuing studies and/or careers in the equine industry to the educational institutions with the curricula they seek and direct individuals interested in collegiate riding to the educational institutions with collegiate riding programs.

Champions

Stimulating and rewarding volunteerism

The EQUUS Foundation launched the CHAMPIONS program in January 2012 sponsored by **Ariat International** to recognize and reward equine volunteer service on behalf of organizations on its network. Individuals achieve Champion status by volunteering a minimum of 24 hours during each calendar year.

The EQUUS Foundation provides scholarships to reward Champions for their volunteer service on behalf of our equine welfare organizations. Seven Champions received scholarships in 2017 based on their volunteer service in 2016.

Champions are also eligible to be entered in a drawing to win a grant for a charity on the network. Ariat International also donates equestrian apparel that is awarded to Champions by random draw.

2017 Equine Service Scholarship Recipients

Alexa Rennia
Grace Hetherington

Nicole Offason
Kyah Probst

2017 Equine Service Alliance Scholarship Recipients

Cari Farmer (USPC)
Megann Robinson (US Equestrian)

Nicole Offason (PATH)

2017 Win A Grant Recipients

\$1,500 1st Place
Lucky Orphans Horse Rescue, Inc.

\$1,000 2nd Place
Ride On St. Louis, Inc.

\$500 3rd Place
Dream Catcher Stables, Inc.

2017 Ariat Gift Award Recipients

Devyn Barrett
Nancy Bidlack
Terry Blum
Stephanie Brake
Carol Burnell
Melinda Colonna
Roberta De Fiore

Deb Gibson
Grace Hetherington
Yana Hills
Laurie Kaiser
Adriana Kaplan
Judith Kirby
Linda Lechner

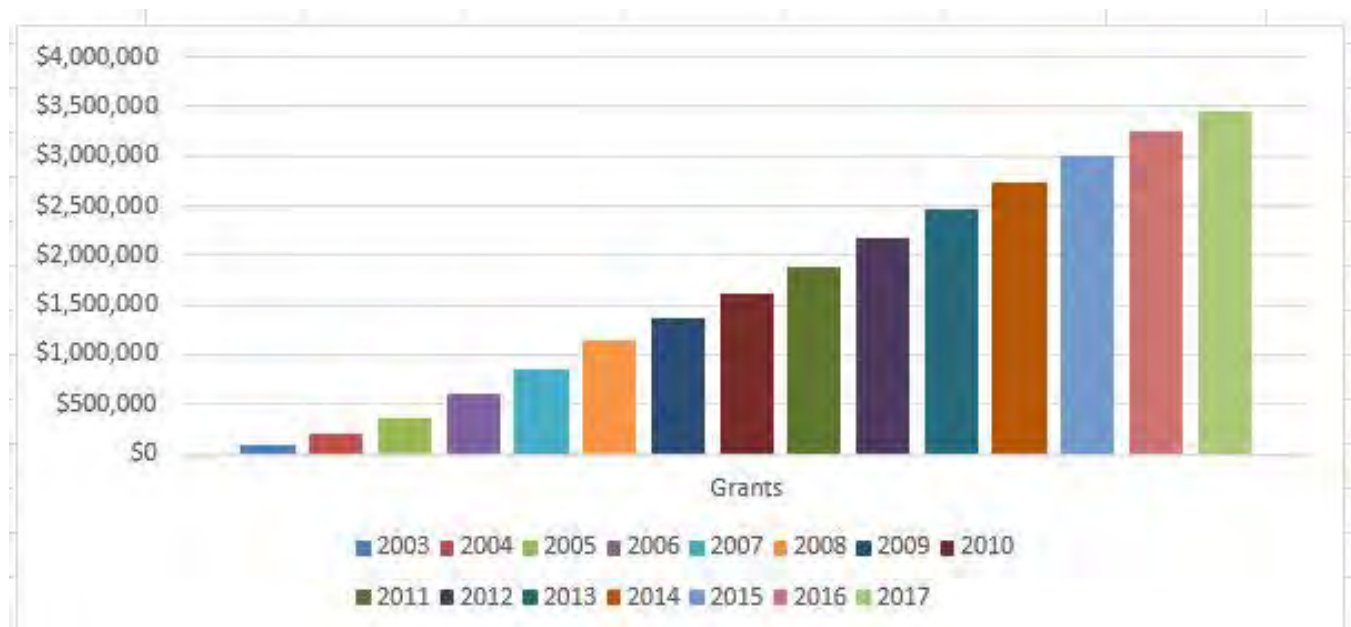
Catherine Madden
Cathie Morton
Roxie Nieroda
Bridget Rogers
Amber Sleeis
Tracey Talley

Grants *Setting standards for horse care and use*

The EQUUS Foundation funds organizations that are either directly involved with horse welfare including rescue, rehabilitation, adoption, foster care, and retirement or organizations that are providing equine assisted activities and/or therapies (EAAT) to the public. Grants are also awarded to specific Alliance members to address issues of common concern, and to promote public advocacy on behalf of horses. Only organizations that are 501(c)(3) public charities and government entities are eligible to receive financial support.

The EQUUS Foundation has developed one of the most comprehensive and impartial verification processes to inspire donor confidence in the charities that receive financial support each year. The needs of the organization, the merits of the organization's programs, services, and activities and the organization's operating budget are carefully evaluated. The number the recipients and the amount of the awards are based on the amount of funds raised by the EQUUS Foundation over the course of the year.

The EQUUS Foundation awarded over \$200,000 this year to organizations operating at the highest standards for horse care and use and for programs where it is needed most.



2017 Grant Recipients

All About Equine Animal Rescue
 Amazing Grace Equine Sanctuary, Inc
 Animals as Natural Therapy
 Appalachian Therapeutic Riding Center
 Beyond The Roses Equine Rescue & Retirement
 Blue Rose Ranch, Inc.
 Brook Hill Farm
 Buffalo Therapeutic Riding Center, Inc.
 CANTER California
 CANTER Michigan
 Central Kentucky Riding for Hope, Inc. (CKRH)
 Charleston Area Therapeutic Riding, Inc.
 Colorado Horse Rescue
 Colorado Therapeutic Riding Center
 Days End Farm Horse Rescue
 Draft Gratitude
 Dream Catcher Stables, Inc
 Endeavor Therapeutic Horsemanship, Inc.
 Equine Rescue and Adoption Foundation
 GALLOPNYC
 Green Chimneys Children's Services, Inc.
 H.O.R.S.E. of CT, Inc.
 Healing Arenas, Inc.
 Healing with Horses Ranch
 Hearts & Horses

Hearts Therapeutic Equestrian Center
 Heavenly Horse Haven
 High Hopes Therapeutic Riding, Inc.
 Hoofbeats Therapeutic Riding Center
 Horse and Hound Rescue Foundation
 Humane Equine Aid & Rapid Transport (HEART)
 Illinois Equine Humane Center, NFP
 JoyRide Center, Inc.
 Kentucky Equine Humane Center
 Little Britches Therapeutic Riding
 Lucky Orphans Horse Rescue, Inc.
 Maker's Mark Secretariat Center
 Manes & Motions Therapeutic Riding Center
 Maryland Horse Industry Board
 Missouri Forget Me Not Horse Rescue & Sanctuary
 Mitchell Farm Equine Retirement, Inc.
 Nature's Edge Therapy Center
 New Beginnings Thoroughbreds, Inc
 New Canaan Mounted Troop, Inc.
 Northern Virginia Therapeutic Riding Program
 Omega Horse Rescue & Rehabilitation Center
 PA Racehorse Rehoming, Rehabilitation & Rescue
 Pegasus Therapeutic Riding Academy
 Pennsylvania National Horse Show Fdn.

People & Animal Learning Services (PALS)
 Prancing Horse, Inc.
 Ray of Light Farm
 Red Clay Ranch Equine Rescue & Sanctuary
 ReRun
 Ride On St. Louis, Inc.
 Riding To The Top Therapeutic Riding Center
 Rising Starr Horse Rescue
 Rocking Horse Ranch Therapeutic Riding Program
 S.T.A.R. Ranch
 Saffyre Sanctuary, Inc,
 Santa Ynez Valley Therapeutic Riding Program
 Sarasota Manatee Association for Riding Therapy (SMART)
 Second Chances Equine Rescue Inc
 Special Equestrians
 Special Equestrians, Inc.
 Standardbred Retirement Foundation
 Sunset TRP Inc, DBA Whispering Manes
 Therapeutic Riding Center
 Thoroughbred Placement Resources, Inc.
 White Bird Appaloosa Horse Rescue
 Windridge Therapeutic Equestrian Center
 Wings of Eagles Ranch

Horse Whisperers

The Horse Whisperers is our named grant program for a special group of people and organizations with an extraordinary kinship with horses. The program is for donors who are inspired by the magical and powerful impact horses have on our lives.

Horse Whisperer grants may be named by the donors in honor of a family member, friend, associate, or in the memory of a loved one or a loved equine companion.

Michele E. Arnhold Memorial Horse Whisperer Grant

Established in 2008 by the family of Michele E. Arnhold in memory of her life-long passion, her pursuit of excellence, and her commitment and contribution to the equestrian sport.

2017 Recipients

GALLOPNYC, Brooklyn, NY
High Hopes Therapeutic Riding, Old Lyme, CT
New Canaan Mounted Troop, New Canaan, CT

Daniel D. Barkan Memorial Horse Whisperer Grant

Established in 2013 by the family of Daniel D. Barkan, a quiet philanthropist and gentleman, in memory of his life-long love of horses.

2017 Recipients

Brook Hill Farm, Forest, VA
ReRun, East Greenbush, NY

Richard L. Parish Memorial Horse Whisperer Grant

Established in 2014 by the family of Richard L. Parish in recognition of his leadership and dedication for over 45 years to the causes supported by the Richard Laurence Parish Foundation.

2017 Recipients

Charleston Area Therapeutic Riding, Johns Island, SC
Green Chimneys Children's Services, Brewster, NY
Kentucky Equine Humane Center, Lexington, KY



Elaine Enick Memorial Horse Whisperer Grant

Established in 2017 in memory of Elaine Enick by her family and friends in recognition of her pursuit to find happiness and joy in everything and her enduring love of horses.

Horse Whisperer Memorial Annual Fund

Memorial Donations are recognized as Horse Whisperers in the year in which the donation is made.

September 1, 2016 - August 31, 2017

Accalia Hope Sullivan

Addie

Ann D. Griggs

Becca Weissbard

Blush

Daryl Lansdale

Denise Lisac

Don Eriksen

Emily Catherine Diehl Schlenker

Gerald Brennan

Ginger

Holmdel Dolly

James Douglas Vere Nicoll

Joan Wallyn

Molson

Oscar

Philip D. Sullivan

Red

Robert (Bobby) Redmon

Sueanne Fulton

Awards *Celebrating the magic and impact of horses in our lives*

"Horses are embedded in our culture and our memories. They have served as our partner throughout the history of civilization - in war, commerce, agriculture, and entertainment.

Of all the animals that have naturally come from the wild, there are very few that have shown any disposition to tolerate man and live with him on the terms we impose. Beyond the horse's athleticism, grace and power and his contributions to human well-being, the horse's inner self, his spirit, and his sweet and generous nature is astounding. He is a giving creature who asks for nothing and carries out his duties without reward.

Countless people experience the fulfillment of spending their days around horses. This is one of the best ways to use one's time on earth.

Let us protect and honor these wonderful creatures to the best of our ability."

Joe Fargis, 1984 individual and team Olympic Gold Medalist in show jumping on accepting the US Equestrian Lifetime Achievement Award in 2014.

Suzanne Marquard

2017 Humanitarian Award Recipient

The EQUUS Foundation and US Equestrian joined together in 2009 to establish the EQUUS Foundation Humanitarian Award to celebrate the humanitarian achievements made by a member of the equestrian world. The recipient may select an equine charity on the EQUUS Foundation Equine Welfare Network to receive a \$5,000 grant from the EQUUS Foundation.



Left to right: Chrystine Tauber, President, United States Equestrian Federation, Suzanne Marquard, Board Chair, GallopNYC, and Lynn Coakley, EQUUS Foundation President.
Photo: Adam Brennan - www.picturesbyab.com.

Dancer

2017 PATH Intl. Equine of the Year

The EQUUS Foundation sponsors the PATH Intl. Equine of the Year Award to honor the equine that best defines the heart and soul of Equine-Assisted Activities & Therapies (EAAT). The horse is inducted into the Horse Stars Hall of Fame, and the owner may select an equine charity on the EQUUS Foundation Equine Welfare Network to receive a \$1,000 grant from the EQUUS Foundation.

Katarzyna Dembek

DVM, MS, DACVIM, Ohio State University 2017 EQUUS Foundation Research Fellow

The American Association of Equine Practitioners (AAEP) Foundation and the EQUUS Foundation joined together to establish the EQUUS Foundation Research Fellows program in 2011 to emphasize the importance of equine research, to reward researchers for their contributions, and to meet the increasing need to train future equine veterinary researchers.

The recipient receives a \$5,000 scholarship for conducting equine research plus a \$500 stipend to assist with travel to the AAEP Convention.

Maryland Horse Discovery Center Network 2017 Washington International Horse Show Klinger Perpetual Award Recipient

The EQUUS Foundation presents the Washington International Horse Show Klinger Perpetual Award for Honor and Service to recognize a horse, individual or organization each year that best demonstrates the values of honor and service as embodied by Klinger. The recipient may select an equine charity on the EQUUS Foundation Equine Welfare Network to receive a \$1,000 grant from the EQUUS Foundation.

Horse★Stars HALL OF FAME

The Horse Stars Hall of Fame was established in 2013 as a joint effort of the EQUUS Foundation and US Equestrian to celebrate the extraordinary talent of horses and the magical bond between horses and people; share the stories of their athletic and humanitarian feats; and build a more informed and compassionate America that values the impact of horses in our lives.

The inductees include stellar, accomplished athletes selected by US Equestrian and horses selected by the EQUUS Foundation that have had or are having a life-changing or inspirational impact on the public. These are the ten horses inducted in 2017.



Dancer
2017 Inductee & PATH Intl. Equine of the Year



Billy White Shoes



GTR Patricks Vindicato.
Photo: Marion Yingling



Mighty Nice Photo: Shannon Brinkman.



Catch Me. Photo: The Book LLC



HH Azur Photo: Shannon Brinkman.



WGCTop of the Mark
Photo:Howard Schatzberg



Sutter



Sjaantje Photo:PicsofYou.com



Twin Pond Camotion

New this year . . .

Meet our EQUUStars

Our EQUUStars are select, iconic and inspirational equestrians with a following who work with us to motivate fellow equestrians and horse lovers to take action for horses in fun and creative ways and become horse protectors.



Hayley Barnhill



Georgina Bloomberg



Jennifer Gates



Brienne Goutal-Martreau



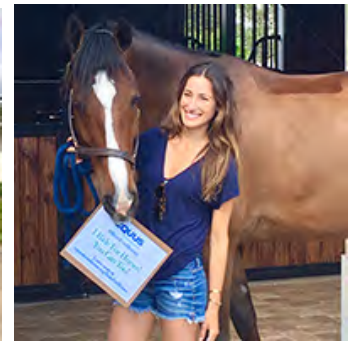
Clementine Goutal



Paige Johnson



Ariana Rockefeller



Jessica Springsteen

Equine Adoption Events

The EQUUS Foundation participated at the 2017 Hampton Classic as the presenting sponsor of the equine portion of the 7th Annual Hampton Classic Animal Adoption Day on Monday, August 28, 2017. The EQUUS Foundation also held Equine Adoption Events at the Old Salem Spring Horse Show on Sunday, May 21, 2017, Fairfield County Hunt Club June Benefit Horse Show on Thursday, June 22, 2017, and at the Gold Cup on September 17, 2017.



These events promote horse protection and the timeless bond horses have with people and showcase adoptable horses and adoption opportunities.

EQUUS Foundation EQUUStars, Georgina Bloomberg, Jennifer Gates and Brienne Goutal-Martreau, and Clementine Goutal, joined us to passionately speak out for horses across the United States whose lives depend on new chapters and opportunities.

Annual Giving & Event Contributors

The EQUUS Foundation wishes to express its appreciation to individuals and organizations supporting our mission through annual giving and event attendance. None of our efforts would be possible without the many individuals and organizations that contribute so generously to ensure the well-being of horses and foster the horse-human bond.

Platinum *Annual Gifts of \$10,000 or more*

Animal Charities of America
Animal Planet
Ariat International
Arnhold Foundation
Bobbie Braun

Newman's Own Foundation
The Richard Laurence Parish Foundation
Mason Phelps Jr.
Samantha Wight

Gold *Annual Gifts of \$5,000 to \$9,999*

Anonymous
Penelope Ayers
Jenny Belknap & Walter T. Kees
Elise Bucknall
CallariCars.com
The Coakley Family
Phyllis Collins
Friends of the EQUUS Foundation
Fairfield Equine Associates
The Gochman Family & Baxter Hill

Jane Henderson, Michaela & Sean Pritchett
Mr. & Mrs. John Ingram
Marylou D'Addario Kennedy & Sean Kennedy
Suzanne Marquard
Victoria McCullough
Juan Pablo Mejia & Lucia Fanjul
NetJets
Laure Sudreau
Anne M. Walker
Wells Fargo Private Bank

Silver *Annual Gifts of \$3,500 to \$4,999*

Dr. & Mrs. Vincent J. Abbatiello
The Estee Lauder Companies
The Frost Family
Goldman Sachs Matching Fund
Dr. & Mrs. Steven Herman

Robert L. Johnson
Lawrence D'Addario & Patricia J. Keenan
Quiet Corner Farm
Visse Wedell

Bronze *Annual Gifts of \$2,500 to \$3,499*

Karen B. Brooks
The Crown Family
Mona Fisher
The Foster Family
Victoria Grauer Ketchum
William R. Harris Jr.

Hi Ho Petroleum
CANA Foundation
Vivienne Munden
Platinum Performance
The Shulman Family
Joel Whidden

Grand Champion *Annual Gifts of \$1,000 to \$2,499*

Agriventures Agway
Mr. & Mrs. Mark Alexander
Bacon Family Gift Trust
Susan Beckerman
Mr. & Mrs. Stephen Bentz
Mr. & Mrs. Michael Carpenter
Wynatte Chu, DDS
Lee Diane Collins
Richard Conlon & Teresa Kendregan
Dr. & Mrs. Charles Cornell
Mr. & Mrs. Eric Filler
Sean T. Hogan Esq.

Hospital for Special Surgery
Elizabeth L. Johnson
Kendra Scott LLC
Dorothy Kesten
The Knadler Family
Mr. & Mrs. Paul Lalli
Mrs. Diane Lippert
Stacia Madden
Margaret Bondy Interiors
Michelle Farmer Collaborate
National Horse Show
Dr. & Mrs. Joseph O'Connell

Orpen Horses LLC
Mr. & Mrs. Clifford Press
Jason William Redlus
Michael & Nancy Sargent
Rosalind Schaefer
Mr. & Mrs. Craig J. Smith
Gabrielle Guise & Jon Tiktinsky
George N. Venizelos
Mr. & Mrs. Rick Weber
Barbara & Mark Zand

Annual Giving & Event Contributors (Continued)

Champion *Annual Gifts of \$500 to \$999*

Valerie Angeli	Fran & Robert Dubicki	Robyn Pavone
Anonymous Donors	Geoff & Silvia Durno Fairfield-	Oliver & Virginia Pursche
Assured Guaranty Matching Gift Program	Westchester PHA	Ariana Rockefeller & Matthew Bucklin
Bryan Baldwin	The Ward M. French Family	Jen & Donovan Ross Susie Scally
Mr. & Mrs. Bruce Barnet	Vida Geranmayeh	Susan Shafer
Gisela Berger	Gregory W. Gingery	Mark Sheptoff Financial Planning LLC
Joseph Bilman	Mr. & Mrs. David Goodwin	Mr. & Mrs. Max Soper
Brian Bizub	Dr. & Mrs. Samuel Goos	Wrenwood Farms
Brigadoon Show Stables Inc. & Lainie Wimberly	Grand Prix Equine	The Tallman Family
Elaine & Bruce Campbell	Greentree Toyota & Brenda Tananbaum	Justine Theurkauf
Capital One Rewards	Annemarie Griggs	Mr. & Mrs. Jay Thomson
Trent A. Carmichael	Karen Handler	Marge Wyrwas & Peter Thorner
Mr. & Mrs. Juan Carlos Carrera	Adele & Richard Higgins	Russo & Toner, LLP
Cristiana Caruso	Dr. & Mrs. Robert Jumper	Susan & Harold Trischman
Susanne & Barry Cooper	Mr. & Mrs. Ernest Kalman	Meredith Trunk
FarmVet	Jennifer Kane	Mr. & Mrs. Lesley Vincent
Ron Danta	Mr. & Mrs. Harold Katz	Washington International Horse Show
Terrance Doyle	Jacquie & Mark Modzelewski	Wells Fargo Giving
	Jason H. Mudd	CokeAnne & Jarvis Wilcox

Friend *Annual Gifts of \$250 to \$499*

Berkeley & Phil Ake	GE Foundation	Mr. & Mrs. Jeffrey M. Looby
Sudie Anning	Nancy & Chris Gibbs	Mark P. Finlay Architects, AIA
Anonymous	Kevin Gilbert	Sebastian Marti
Stacey Arani	Dr. Penny Giovanetti	Rebekah Oliver Mouch
Daniel D. Barkan Estate	Beth Gralnick	Elisabeth Munder
Tricia Beal	Kerri A. Gruninger	Celene & Marc Oken
Benedicte Berg & Jeremy Deutsch	Gigi Haber MFH	Courtney Phibbs Boyd
Cheryl Berger	Hansen & Hansen	Beth Porter
Beval Saddlery Ltd.	Brian & Deborah Henry	Marc Powell
Marguerite Brennan	Mr. & Mrs. Theodore Huber	Queenie Productions LLC
Shannon Coakley	Gretchen Jelinek	M. Scott Redstone, Farrier
Mr. & Mrs. Eduardo Cruz	Paige Johnson	John G. Russell
Marsha Dammerman	Lisa Kaine Dunn	Susan B. Schoellkopf
Ms. Michele Davenport	Mr. & Mrs. John S. Kim	Jaclyn Sharp
Debbie Dorsey	Mr. & Mrs. Michael Klein	State Street Foundation
Mr. & Mrs. Sydney Elkin	Lemay, Inc.	Vanessa Stevenson
Lisa Ellis	Ms. Susan Fete	Jefferson Strider
Fairfield Bridle Trail Association	Liberty Mutual Foundation - The	George & Chrystine Tauber
Hannah Forsberg	Gariepy Family	Annie Taylor
Kathleen Gannon	Connie LoMonaco	Mr. & Mrs. Jack Towell

Annual Giving & Event Contributors (Continued)

Fan *Annual Gifts of Under \$250*

Fredda Abrams	Wade W. Coleman	Janise Gray	Andrew Laude
Gabrielle Alecia	Kathleen Condon	Maggie Greene	Chloe Leger
Bill & Barbara Alesi	Mr. & Mrs. Raymond Condon	Sierra Gundersen	Ila Lemonis
Atalya Alkalay	Jordan Conlon	Alexander Hamer	Rachelle Leonard
Jim & Meghan Allen	Susanne & Whitley Cox	Trinity Hammerschmidt	Mr. & Mrs. W. Jay Leukart
Amazon Smile	Isabella Cruz	Kimberly Handler	Nancy Lince
Richard P. Anderson	Jill Danenberg	Mr. Joshua Harris	Britta Lippert
Anne Anthony	Katherine Dash	Mrs. Nicole Harrison	Lannie Lipson
Aqua-Lawn, Inc.	Liz Davoll	Ms. Constance Hartman	Mr. & Mrs. Michael
Charlotte Armstrong	Dean Dignelli	Sarah Hathaway	Lonsdale
Anonymous	Hannah Doherty	Ella Hecker	Kelly Lowry
Olivia Autore	Clare Dougherty	Susan Heller	Beatrix Maldonado
Ms. Deborah Ball	Elaine Dow	Mr. & Mrs. Donna & Wil	Maureen H. Lutz
Mrs. Juliet Battle	Henry & Barbara Duhamel	Hershberger	Cira Malta
Isabella Baxter	Kate Dunham	David Hofmann	Lexi Maounis
Dylan Bazaar	Margaret Duprey	Mr. Brian Horan	Serena Marron
Riley Bazaar	David Dymecki	Dr. Rachel Hubbard	Mr. Dinesh Martien
The Beebe-Edwards Family	Ms. Sarah Reynard Epifano	Margaret Huber	Mr. & Mrs. Bernard Martin
Mr. & Mrs. Thomas Belden	Equine Alchemy, LLC	Campbell L. Hudkins	Mr. & Mrs. David Matz
Michael Belknap & Martha	Mr. & Mrs. Steven Ercole	Sofia Ippolito	Claire McCabe
Burke-Hennessey	Jessica Ernst	Stacey Isles	Mr. Jonathan Mccann
Annabelle Besgen	Daisy Farish	Augusta Iwasaki	Katie Erickson
Calli Best	Coco Fath	Mr. & Mrs. Jason Jacobs	Jennifer Meacham
Beth Bidgood	Bonn Jaki	Peyton Jelinek	Timothy Meinke
Carla Bienz	Holly Field	Kristopher T. Jensen	Lucas Mejia Fanjul
Caroline Blake	Annabelle Filler	Karen Joblove	Juan Pablo Mejia
Dr. Laurel Blakemore	Piper Filler	Heidi Johnson	Sophie Michaels
Olivia Blanchette	Ms. Cheryl Finger	Charlotte Jumper	Rita & Robert Miller
Julia Blaney	Mr. & Mrs. David Fleming	Margaret Junkin	Ellen Mollerus
Georgina Bloomberg	Mr. & Mrs. John Fleming	Lili Kaissar	Emma Monroe
Frances B. Steinwedell	John Foran	Samantha Karp	Roanna Mostman
Kaaren Boothroyd	Eloise Foster	Mr. & Mrs. Thomas Kaylor	Conal Mueller
Camille & Tony Branca	Marguerite Foster	Sienna Keane	Maryann Bovich Muller
Leigha Brigham	John Fox	Mr. & Mrs. Thomas Keim	Carla Nolan
Kimberly Brunson	Nicole Frankenfield	Kaelyn Kennedy	Catherine Nolan
Alexandra Bussan	Ruth T. Fried	Ms. Alicia Kershaw	Northeast Tent Productions
Michael & Yovanka	Suanne Margaret Fulton	Isabelle Kim	Julie Nye
Butchko	Mrs. Toni Gilbert	Grace Klein	Dr. Jean Oberg
Diane Carney	Matthew Giles	Larsen Klein	Nick Oefinger
Sandra Chapman	Mr. & Mrs. John Gizzi	Martin Kleinbart	Patrick & Marissa Olles
Walter & Jeanette Ciciora	Samuel Gleason	Lorelei Knadler	Melinda & John O'Neill
Suzanne Ciechon	Becky Gochman	Dr. Lindsay Knight	Ashley O'Reilly
Philip Cillis	Mimi Gochman	Samantha Kramig	PayPal Giving fund
Gail Clifton	Sophie Gochman	Helena Krueger	Catalina Peralta
Clipper Barn of Connecticut	Harry Goldsmith	Molly Kubiak	Mr. & Mrs. Robert Peterson
Dana Cofsky	Juan Gonzalez	Layla Kurbanov	Alexandra Pielet
Dr. Barry Cohen	Ms. Katie Goodrich	Alexandra Lalli	Katie Pierce
Marcy Cohen & Mona	Grace Gottlieb	Todd, Leslie & T.J.	Jillian Pizzi
Fisher	Harper Gottlieb	Latchford & Jean Wilson	Mr. & Mrs. Edward Placey

Annual Giving & Event Contributors (Continued)

Fan (Continued)

Ms. Helene Sari Pomponio	Kathleen Schwencke	Joey Tate	Laura Wasserman
Daryl Portela	Callie Seaman	Ashley Taylor	Stella Wasserman
Mr. & Mrs. J. Ridgely Porter III	Hannah Selleck	Michael Taylor	Mrs. Tammy Waugh
Michaela Pritchett	Ms. Frances Sellers	Maddie Thorn	Lauren R. Weiss
Pascal Raillard	Gina Serkasevich	Mr. & Mrs. Douglas Tirola	Tracy Wetstein
Fiona Ray	Charlotte Simmons	Mr. & Mrs. Stephen	Emma Whidden
Colleen Reed	Dr. David K. Simon	Tischman	Sophie Whidden
Claudia Robinson	Barbara Singer	Mr. & Mrs. Curt R. Tobey	Kate White
Lacy Robinson	Jessica Singer	TobiCares	Cynthia Williams
Mrs. Felicia Rogan	Sophia Soja	Ellen Toon	Steve Williams
Ellery Rohr	The Stanton Family	Robin Torodor	Arlene Wingfield
Robert Rose	Isabelle Steiner	Trafalgar Square Books	Woodedge
Dr. & Mrs. David Roth	Taylor Bodson	Nilani Trent	James Wooster
Bobbi Rottman/Eques	Mr. & Mrs. Donald Stewart	Marcia Layton Turner	Doyle Wooten
Solutions	Sarah Stone	Walter E. Turnquist	Missy Wryn
Lainie Rubin	Elisabeth A. Stuart	Emmaline Twitchell	Jules Yasuna & Joanne K.
Lily Ruis	Kyla Sullivan	United Way Bergen	Germaine
Ann Russo	Richard & Diane Sullivan	County - KPMG	Amy Yuter
Grace Russo	Shanda Sulivan	Mr. & Mrs. Robert	Mr. David Zabel
Jenna Sacks	Christine Swail	Verrengia	Dolce Vita Design
Saddle Club LLC	Robin Sweely	Arabella Visser	Mr. & Mrs. John
Chelsea Samuels	Alison Sweeney	John Walker IV	Zimmerman
Patricia Sanger	Madison Syfert	Eleanor Walper	Mr. David Zucker
Emma Schaff	Brenda Tananbaum	Ms. Buffy Walton	Mr. & Mrs. Charles Zylstra

Donations in Kind

Aiken Horse Park Foundation	The Clothes Horse	Hunt Ltd	Reflections Photography
Amazing Spaces LLC	Country Heir	Imperial Dental Associates,	Ridgefield Equestrian Center
American Gold Cup	Devon Horse Show & Country	PC	Royal Pet Club
Back in the Saddle	Fair	JODS	Sailor - Sailor
Barbara's Visions	Pamela Einarsen Photography	JOTT USA	Salamander Resort & Spa
Baymar Farms Inc.	Winter Equestrian Festival	Katharine Page	Satin Wellness
Belfield Farm Show	Equine Design Photography	Kennedy Equine Transport	SEL Photography
Management	Fab Finds by Sarah	Lake Placid Horse Show	Skiffingtons
Bio One, Inc.	Fairfield County Hunt Club	Association	SKINCARE by Kristen A. Evans
Blenheim EquiSports	Mr. & Mrs. Andrew J. Flower	Langer Equestrian Group,	Southbound Show
Kelly Bohnenberger	Fox Lea Farm Inc.	Inc.	Management, Inc.
Bradford Renaissance Portraits	Gardnertown Farms	Flora Levin, MD	Stepping Stone Farm, Inc.
Brave Horse Show Series	Geoff Tischman Photography	Maffitt Lake Equestrian	Swan Lake Horse Shows
Brownland Farm, LLC	Grand Prix Tutoring	Center, LLC	Thunderbird Show Park
Buffalo International Horse	Great Lakes Equestrian Festival	Margaret Bondy Interiors	TKEQtheshop.com
Show	Great Southwest Equestrian	Masterson Equine Services	Tryon Horse Shows LLC
Callari Auto Group	Center	Montauck Tackle Company	Turner & Co.
Camelot Events	Greyhaus Literary Agency	Morrissey Management	Twin Lakes Farm
Capital Challenge Horse Show	Hampton Classic Horse Show	Group	Vermont Summer Festival
Chagrin Valley Hunter Jumper	Hansen & Hansen	New Canaan Mounted	Zephyr Farm Inc.
Classic	HITS, Inc.	Troop	
Chase Meadows Farm	Hunter Jumper Association of	Old Salem Farm	
Classic Company Ltd.	Michigan	Ox Ridge Hunt Club	
		Pennsylvania National	
		Phelps Media Group	
		Pin Oak Charity Horse Show	
		Progressive Showing	
		Jumping	



Contact Us

EQUUS Foundation, 168 Long Lots Road, Westport, CT 06880
203-259-1550 - mail@equusfoundation.org
www.equusfoundation.org

The EQUUS Foundation is governed by a Board of Directors representing a cross-section of the equestrian community, including supporters, participants, and professionals.

The EQUUS Foundation also does business under the name Horse Charities of America. Information about Horse Charities of America and the EQUUS Foundation is available at two identical website addresses, equusfoundation.org and horsecharitiesofamerica.org. Donations are tax-deductible to the full extent of the law.

Board of Directors

Chairman: Jenny Belknap Kees
President: Lynn Coakley
Vice Chairman: Catherine Herman
Secretary-Treasurer: Jane Henderson

Patricia Keenan
Richard Mitchell DVM
Anne Walker
Susan Weber

Financial Statement for the Year Ending August 31, 2017

Total Income		\$405,707
Program Expenses	(\$431,636)	
Fundraising Expenses	(\$44,585)	
Management Expenses	<u>(\$29,797)</u>	
Total Expenses		(\$506,018)
Net Ordinary Income		(\$100,311)
Unrealized Loss /Investments		\$0
Net Income		(\$100,311)
Beginning Net Assets		\$404.173
Ending Net Assets		\$302,268

A Brief History

The EQUUS Foundation, Inc., was incorporated in the state of Connecticut and established as an IRS tax-exempt 501(c)(3) public charity in August 2002 so that the donations raised in association with the 2003 Fairfield County Hunt Club June Benefit Horse Show in Westport, Connecticut, could be awarded to several local horse charities instead of just one.

The first grants were awarded in August 2003 to seven locally based charities. In 2005, the Foundation sponsored another event, this time in Wellington, Florida, which allowed us to increase the number of grant awards.

In 2011, the EQUUS Foundation transitioned from being all-volunteer to appointing the founder, Lynn Coakley, to the staff position of President. Since that time, the EQUUS Foundation has expanded its programs and now awards grants to charities across the United States.

What started locally has now become a nationwide effort to keep America's horses safe and to ensure that they have loving homes where they can thrive and have opportunities to share their unique abilities with people.

Thank You!